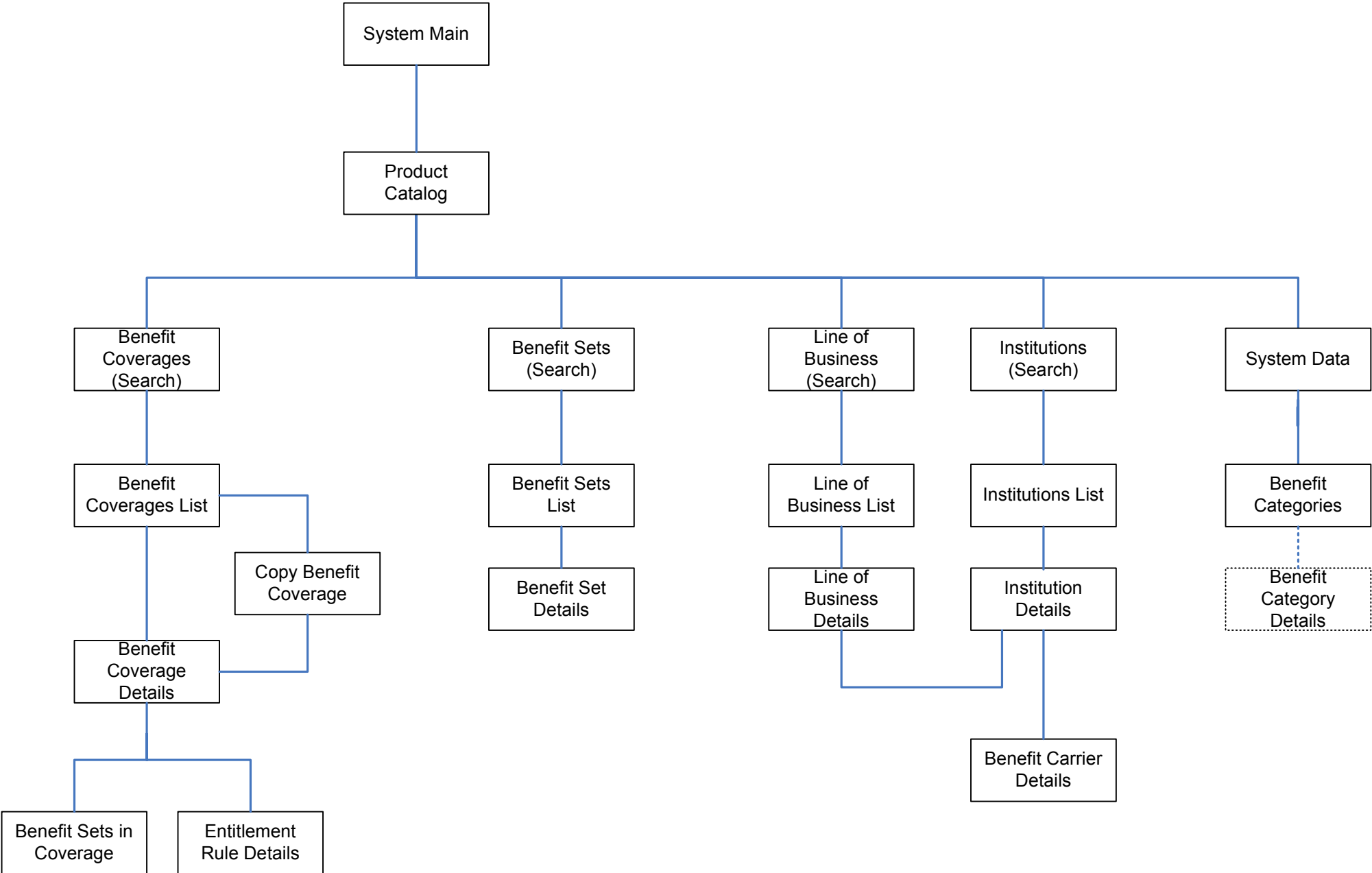
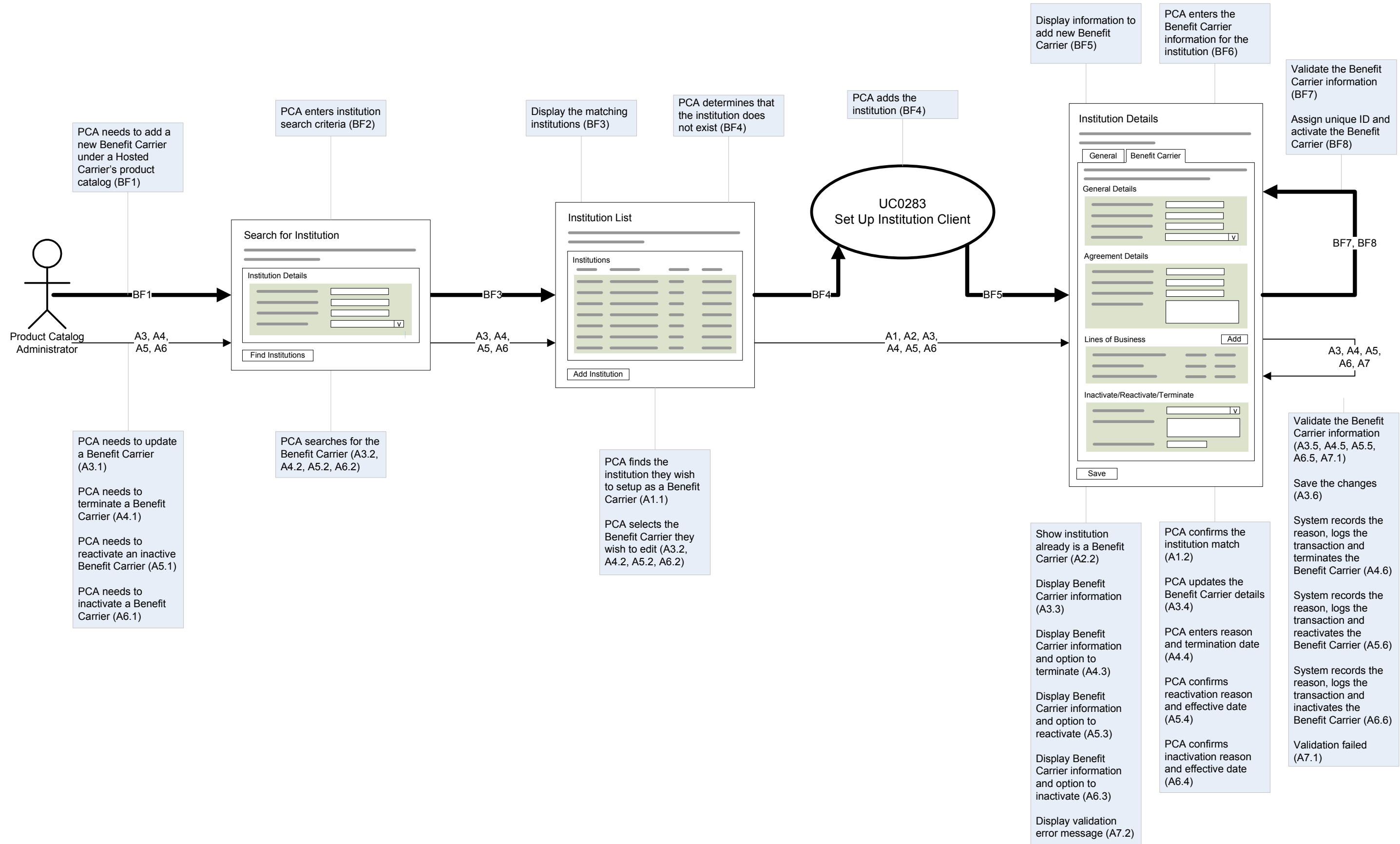


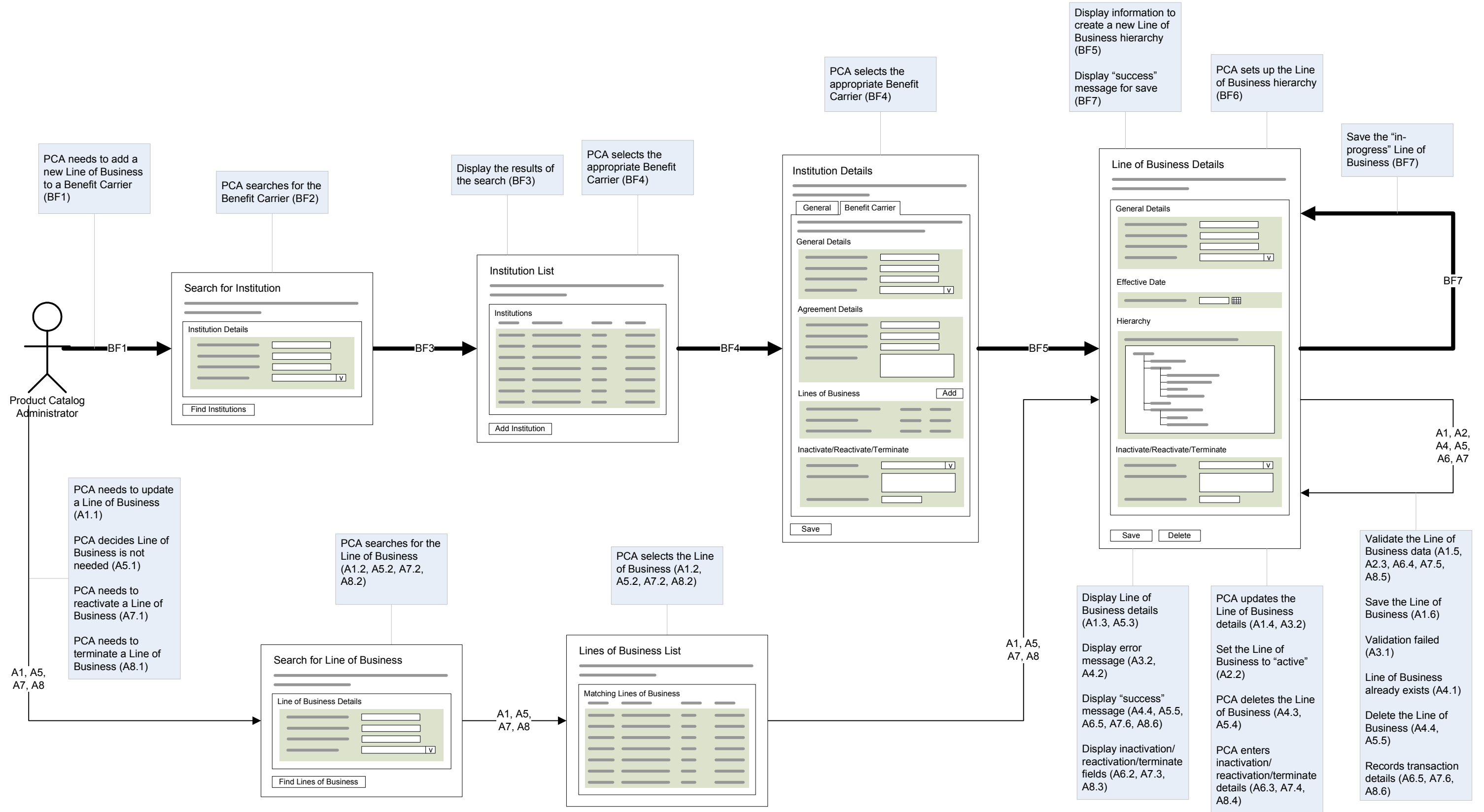
Navigation Map: Product Catalog (Groups 1, 2)



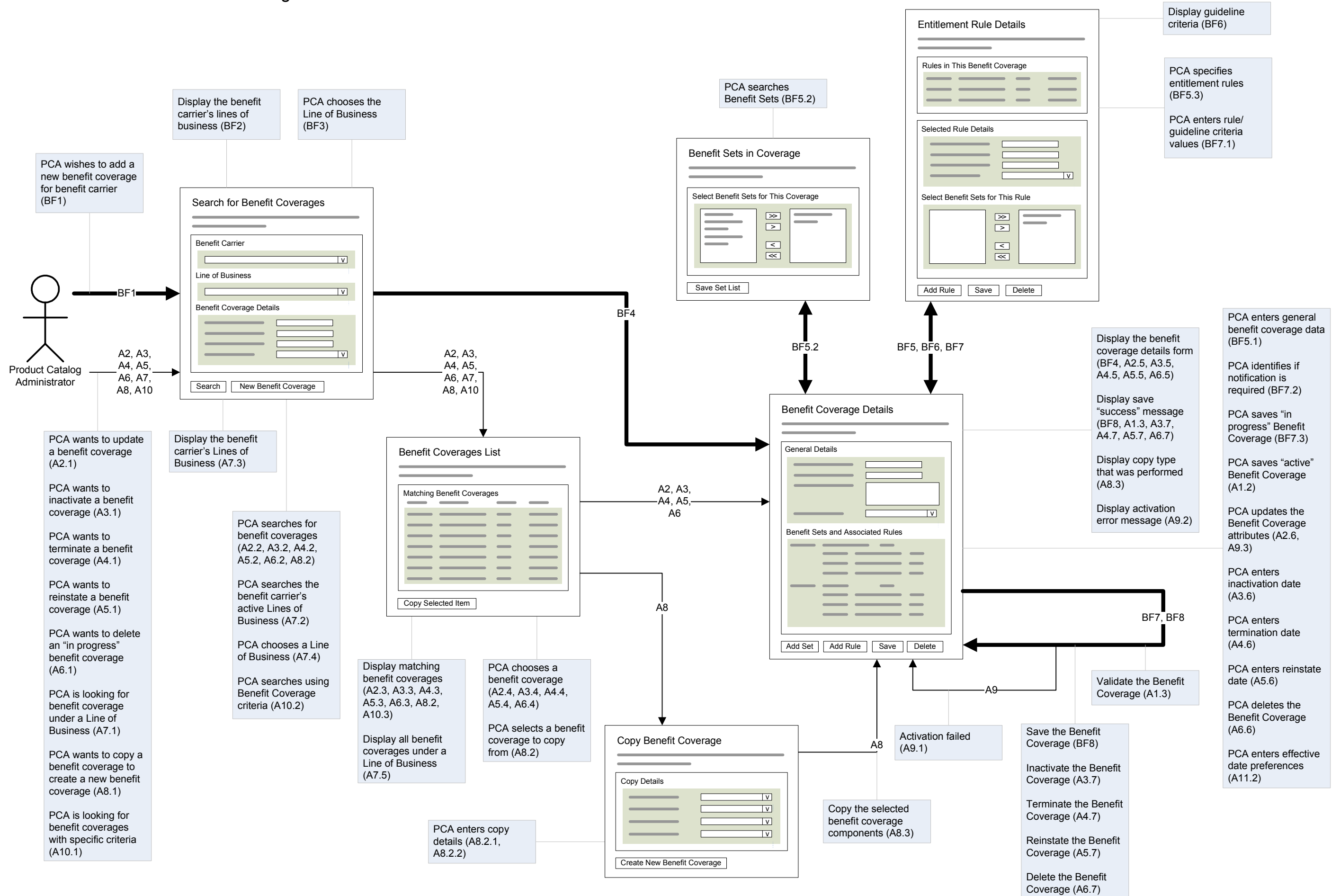
Storyboard: UC0021 Establish Benefit Carrier



Storyboard: UC0022 Offer Line of Business



Storyboard: UC0025 Offer Benefit Coverage



Storyboard: UC0238 Create Benefit Set

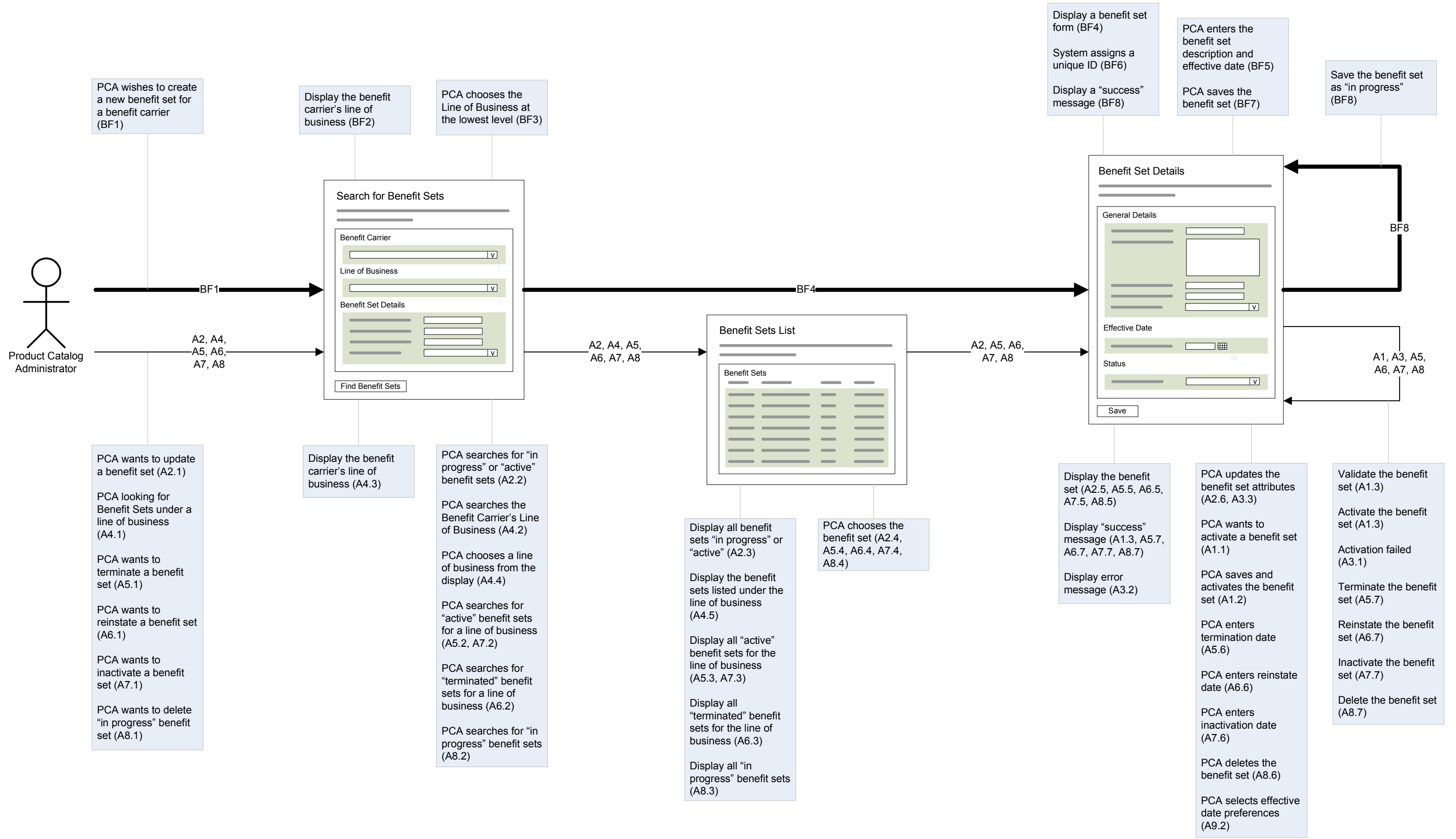
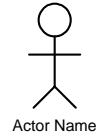


Diagram Legend: First Cut Storyboards and Navigation Maps

The first-cut storyboards and navigation maps provide an initial visualization of the screens and screen flows that are suggested by the system use cases. The purpose of these artifacts is to show a possible way that the functionality represented by the use cases could appear in a final system. These are not intended to show the best or only way that the system could be realized but are meant to facilitate further discussion around the system use cases as the project moves from requirements into analysis and design.

The list below describes the elements that are used in the first-cut storyboards and navigation maps.

First Cut Storyboard Elements



Actor Name

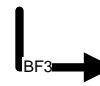
Use Case Actor Icon

This represents the actor performing the actions in the use case. This is the starting point for the storyboard.



Save to File Icon

This icon represents the action of saving a document or file to a physical disk (floppy or hard disk).



Basic Flow Arrow

Heavy connector arrows represent the basic flow defined in the use case. Labels indicate which step is being shown.



External System Icon

This icon represents the involvement of an external system in the completion of the storyboard flow.



Alternate Flow Arrow

Light connector arrows represent the alternate flows as defined in the use case. Labels indicate which step is being shown.



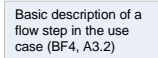
Printout/Report Icon

This icon represents that a printed document or report has been created as part of the storyboard flow.



Use Case Reference

Indicates a reference to another use case. The details of the referenced use case are shown on a separate diagram.



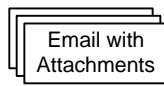
Information Call-out

Call-out boxes contain basic details regarding the steps from use case flows occurring at different locations in the storyboard diagram. Consult the use case document for full details.



Stop Flow Marker

The end point for the use case flows.



Electronic Document(s) Icon

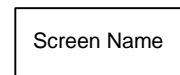
Indicating documents or correspondence created in a digital form as part of the storyboard flows.



Off-Page Link Marker

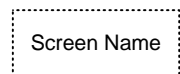
This marker indicates that the storyboard flow continues on another page of the diagram. The flow can pass between pages using the matching marker on each page. This is a two-way marker.

Navigation Map Elements



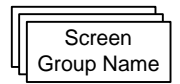
System Screen

Basic navigation map element indicating a stand-alone screen that is part of the system.



Possible System Screen

Navigation map element showing a stand-alone screen that has been identified as part of the system but that is not present directly in use cases being illustrated by the current storyboard.



System Screen Group

Navigation map element indicating an area where there are a number of stand-alone screens that are similar in function or subject matter.



Possible Navigation Map Connector

Navigation map connector showing possible relationships between system screens. These connections seem likely but they are not specified in the use cases being illustrated.



Navigation Map Connector

Navigation map connector showing the relationships between system screens. The relationships are bi-directional unless explicitly shown with directional arrowheads.